

2014

ProTrac and Kits for wholesalers

Building a hydraulic hose kit for a customer

One of the tasks that causes inventory to be out of step with reality, has to do with creating a kit. Whether you sell a kit once a week or 20 times a day, if your system cannot work with kits then your inventory will be off.

Every wholesaler who handles kits has some collection of parts that are

- **Made into a product**
- **Put into a box for some special service work**
- **Put together to sell off several items with one item on the invoice.**
- **ProTrac handles all of these processes**

This brochure is for a standard Kit where you always have the same items with labor for the kit, this is called our “K” KIT. The kit has a hydraulic hose and two ends in the kit. This keeps the process very simple.

ProTrac can handle much more complicated kits.

800-711-7374

Mel Carney
Professional Data Systems, Inc.
12/01/2014

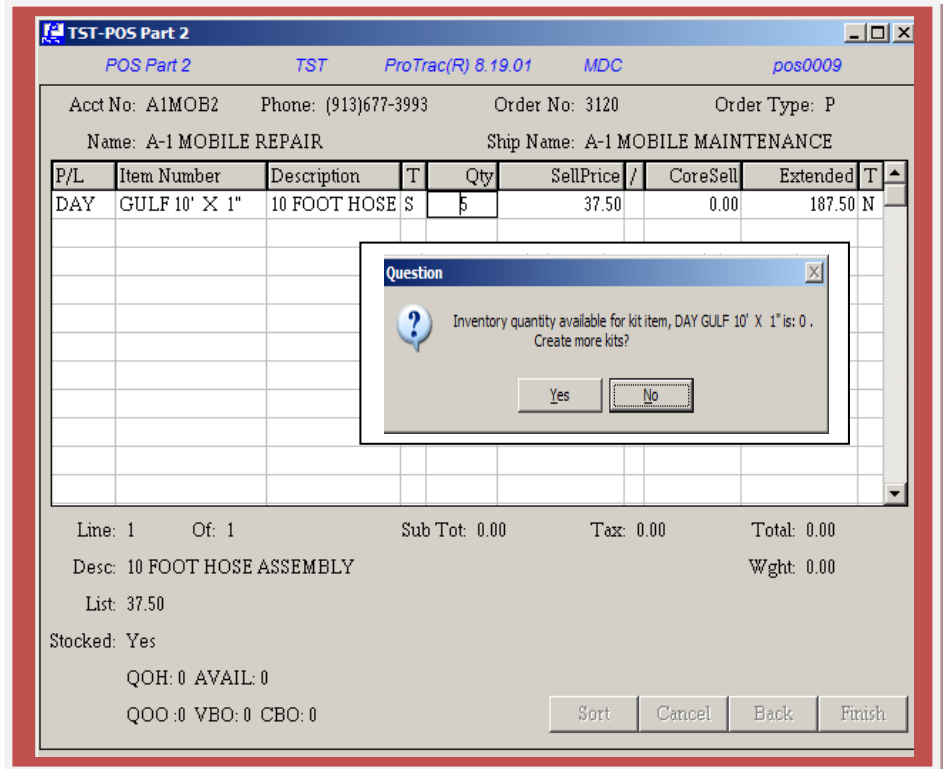


HOSE KIT AND ASSEMBLY

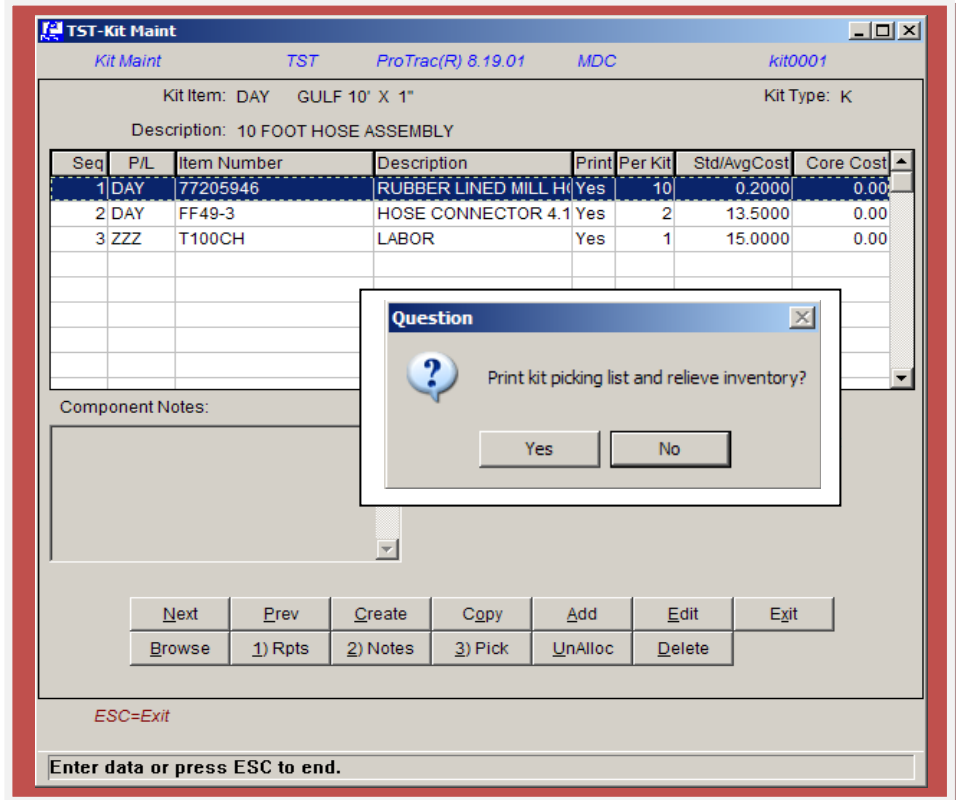
Page 2

ProTrac offers you two different ways for you to handle your hose assembly sales. The first is to use a kit and build the hoses as a part of the order process. These kits would not have to be built prior to making the sale. During the sales order process, if you sell a kit that is not on hand and available, ProTrac will drop down the box that asks if you want to pick the kits that have just been ordered.

If you say yes the next screen will come up with the kit that you sold.



This screen gives you a chance to review the kit that has been sold and to have a pick ticket sent to the warehouse to pick and assemble this hose.



HOSE KIT AND ASSEMBLY

Page 3

If you tell ProTrac that you want to pick the kits: A pick ticket is created for just the Kit items. The kit - pick ticket, is used to pull and assemble the required number of kits for this order. When the kits are complete then you would release the pick ticket for the entire order, which would include the newly assembled kits.

The Pick Ticket for the Kit is telling the warehouse that it needs 50 foot of 1" hose
10 hose connectors – one at each end
And there is some labor involved to ensure the proper cost.

KIT COMPONENT PICKING SLIP

*** TEST TEST TEST TEST *** 12/12/2005
 *** DO NOT USE DO NOT USE *** 44

LEES SUMMIT, MO 64063
(816) 554-3010

Special Instructions for Kit: DAY GULF 10' X 1" 10 FOOT HOSE ASSEMBLY

Item P/L	Item Number	Description	Bin Loc	Qty Needed	Qty Avail	Qty Picked
1	DAY 77205946	RUBBER LINED MILL HOSE 1"		50	1,000	_____
2	DAY FF49-3	HOSE CONNECTOR 4.19 X 1.24		10	100	_____
3	ZZZ T100CH	LABOR		5	69	_____
Totals:				65		_____

Qty Needed Qty Picked

*** Indicates quantities were overridden; Inventory may need adjusting.

The invoice on the right has listed the kit and the components of that kit.

ProTrac has only priced the kit itself and not the individual parts.

You have options on how a kit is displayed and priced on the invoice.

This keeps your customer from coming back and saying that they can get the connectors cheaper.

AUTOMOTIVE PARTS PROFESSIONALS DATE: 12/12/2005 TIME: 11:41:01
 201 NW VICTORIA ACCT NO: A1MOB2 TERMS: 2*10 NET30
SLS ID: MDC SLS REP: JON

LEE'S SUMMIT, MO 64086 PO NUM: 96539
SHIP VIA: Delivery

Phone: (816)525-6766 Fax: (816)525-8121 TAX EXEMPT#:
 BILLED AT LEES SUMMIT, MO LOCATION APD PAGE: 1
ORDER: 3120
INVOICE: 1622

SOLD TO: SHIP TO:
 A-1 MOBILE REPAIR A-1 MOBILE MAINTENANCE
 5441 MERRIAM DR. 5441 MERRIAM DR.
 Shawnee Mission KS 66203 MERRIAM KS 66203

(913) 677-3993

I N V O I C E

PL	ITEM NUMBER	DESCRIPTION	*---QUANTITY---			YOUR PRICE	EXT AMOUNT
			ORDER	SHIP	B/O		
	DAY GULF 10' X 1"	10 FOOT HOSE ASSEMBLY	5	5		37.50	187.50N
	DAY 77205946	RUBBER LINED MILL HOS	50	50			
	DAY FF49-3	HOSE CONNECTOR 4.19 X	10	10			
	ZZZ T100CH	LABOR	5	5			

THANK YOU FOR YOUR PURCHASE
OUR NEW HOURS ARE 7:00AM TO 5:30PM

Pay \$183.75 if paid by 12/22/05. Total due by 01/11/06.

WEIGHT:	.00	SUB TOTAL:	187.50
TAXABLE:	.00		
NON-TAX:	187.50		
LABOR:	.00	TAX:	.00
TENDER:	.00 CH	FREIGHT:	.00
CHANGE:	.00	INV TOTAL:	187.50

X _____
8 TST RECEIVED BY

HOSE KIT AND ASSEMBLY

THE ASSEMBLY PROCESS: This was designed to let you create kits in advance or to create a large number of the same hose assembly. For this example you are going to assemble 10 hoses and put them on the shelf.

ProTrac helps you track the inventory even when it has been pulled and is being assembled. The top display shows you your inventory position, prior to creating and releasing an Assembly Order, to be picked and created. The second display is the assembly order that has been created to pre-assemble 10 hoses for Mobil Repair.

P/L-Item#:	DAY FF49-3	Resv AO: 0	QAVL: 90	QOH: 90
Desc:	HOSE CONNECTOR 4.19 X 1.24	AO BO: 0	Resv: 0	OnOrd: 0
		OnOrd AO: 0	CBO: 0	VBO: 0
UPC:		CoreQty: 0	DefQty: 0	
Vend Itm#:		OnHand Value @ Sys Cost: 607.50		

The Assembly process was started by creating a Bill of Material for this hose assembly

TST-Assembly Order

Assembly Order
TST
ProTrac(R) 8.19.01
MDC
ao0009

Assembly Order#: 50	Entered By: MDC	Entered Date: 12/12/2005	A=Add P=Planned R=Release B=Backord F=Finished V=Voided
Assembly: DAY GULF 10' X 1"		Planned Qty: <input type="text" value="10"/>	Status: P
Description: 10 FOOT HOSE ASSEMBLY			
Special Instruction: <input type="text" value="We need 10 hoses for Mobil Repair for next week"/>			
Required: <input type="text" value="12/20/2005"/>	Released:	Completed:	
Planned Cost: 317.50	Scheduled Cost: 0.00	Actual Cost: 0.00	

Assembly BOM								
P/L	Item Number	T	Usage	Planned	Released	B/O	Used	Assembly Cost /
DAY	77205946		10.00	100	0	0	0	1.0000
DAY	FF49-3		1.00	10	0	0	0	6.7500
ZZZ	T100CH		1.00	10	0	0	0	15.0000

Line#: 1 Of 3

Description: RUBBER LINED MILL HOSE 1"

HOSE KIT AND ASSEMBLY

Page 5

This display indicates that 10 units have been pulled and placed into the Assembly Process. Note the total On Hand Value at cost for this product. There are 90 hose connectors On Hand, 80 available for sale, and 10 in the AO (Assembly Process)

P/L-Item#: DAY FF49-3	Resv AO: 10	QAVL: 80	QOH: 90
Desc: HOSE CONNECTOR 4.19 X 1.24	AO BO: 0	Resv: 0	OnOrd: 0
UPC:	OnOrd AO: 0	CBO: 0	VBO: 0
Vend Itm#:	CoreQty: 0	DefQty: 0	OnHand Value @ Sys Cost: 607.50

This display indicates that this Assembly order has been released for assembly.

TST-Assembly Order

Assembly Order TST ProTrac(R) 8.19.01 MDC ac0009

Assembly Order#: 50 Entered By: MDC Entered Date: 12/12/2005 Status: F

Assembly: DAY GULF 10' X 1" Finished Qty: 10

Description: 10 FOOT HOSE ASSEMBLY

Special Instruction: We need 10 hoses for Mobil Repair for next week

Required: 12/20/2005 Released: 12/12/2005 Completed: 12/12/2005

Planned Cost: 317.50 Scheduled Cost: 317.50 Actual Cost: 317.50

Assembly BOM

P/L	Item Number	T	Usage	Planned	Released	B/O	Used	Assembly Cost
DAY	77205946		10.00	100	100	0	100	1.0000
DAY	FF49-3		1.00	10	10	0	10	6.7500
ZZZ	T100CH		1.00	10	10	0	10	15.0000

Line#: 1 Of 3
Description: RUBBER LINED MILL HOSE 1"

ESC=Exit J=Jump to Line#

Browse the items, press the Enter key to modify an item.

Question

?

Press 'Yes' to have this function move all the released quantities to the used column and mark the assembly order as complete. Press 'No' to modify quantities, including the planned quantity for the Assembly, manually.

Once the 10 hoses have been assembled they will be finished in the Assembly Process by selecting Finish.

At that time if you have had to add or subtract any parts or pieces from the assembly it can be done before it is released.

When you release the drop down will appear and you click the yes button and the transaction is complete.

Professional Data Systems, Inc LEES SUMMIT, MO Assembly: DAY GULF 10' X 1" Description: 10 FOOT HOSE Kit Planned Qty: 1 Bin Loc: Spec Inst: DENNIS WANTS FOR STOCK	VIN: Assembly Order: 160 Entered Date: 07/23/2012 Released Date: 07/23/2012 Print Date: 07/23/2012 Required Date: 07/24/2012 Page: 1 Assembler's Initials: _____
--	---

P/L	Item Number	Description	Bin Loc	On Hand	Planned Usage	Qty Planned	Qty Released	Qty Used
DAY	77205946	1" RUBBER LINED MILL HOSE		1864	10.00	10	10	
DAY	FF49-3	HOSE CONNECTOR 4.19 X 1.24		105	2.00	2	2	
ZZZ	T100CH	LABOR		0	1.00	1	1	

Once you have created an Assembly Order this is the document that the warehouse uses to create 10 hose kits.

HOSE KIT AND ASSEMBLY

When the assembly is released the hose connectors inventory file is updated and it now shows that there are 80 hose connectors on hand and available for sale. The Assembly Order has been cleared.

P/L-Item#:	DAY FF49-3	Resv AO: 0	QAVL: 80	QOH: 80
Desc	HOSE CONNECTOR 4.19 X 1.24	AO BO: 0	Resv: 0	OnOrd: 0
		OnOrd AO: 0	CBO: 0	VBO: 0
UPC:			CoreQty: 0	DefQty: 0
Vend Itm#:			OnHand Value @ Sys Cost: 540.00	

The assembly order has added 10 – 10 foot hoses with connectors into the Gulf 10’ X 1” inventory item record. An order can be taken for the completed item. All of the costs have been moved to this inventory file and it has its own cost and sell price.

P/L-Item#:	DAY GULF 10' X 1"	Resv AO: 0	QAVL: 10	QOH: 10
Desc	10 FOOT HOSE ASSEMBLY	AO BO: 0	Resv: 0	OnOrd: 0
		OnOrd AO: 0	CBO: 0	VBO: 0
UPC:			CoreQty: 0	DefQty: 0
Vend Itm#:			OnHand Value @ Sys Cost: 317.50	

Professional Data Systems, Inc PRO 07/24/12 - 11:19
 ProTrac(R) 8.22.03 Mel ao0003

Assembly Order Quantity Check

Check Available Quantities for:
 Assembly Order Number
 Order No: 162

Once you have told ProTrac what you want to build and how many you need - you can run this report to tell you if you have enough to build that many kits.

P/L Item Number	Description	Max Quantity
DAY GULF 10' X 1"	Food Hose	32

P/L Item Number	Description	Planned Usage	Quantity Available	Max Quantity
DAY 77205946	1" RUBBER LINED MILL HOSE	10.00	1654	165
DAY FF49-3	HOSE CONNECTOR 4.19 X 1.24	2.00	63	32
ZZZ T100CH	LABOR	1.00	0	*

The above kit is designed for building a product like a hose or any standard unit where there are a set number of products including labor. We also have a 2nd Kit process for putting together a kit for doing service work on site. To Repair a machine, truck, or other larger unit in the field, the service tech might have to take along a hydraulic kit, electronic repair kit, or any gathering of pieces and parts that is unique to a specific truck or task. This Kit can be set up to price the individual items on the invoice or just the Kit itself.

Fasteners

If you bring in bulk fasteners and have those fasteners put into 5lb and 10 lb containers, ProTrac’s Kit process is designed for that task.

Large Kits

ProTrac’s Kit process can be used to build large equipment

If you have a special or unique kit, send us the parts including the price of the unit and the cost of the items that make up that unit. We will work to put it into our kit program and show you how easy it is to keep the unit and your inventory under control.

Mel Carnev